

ComicByte[®]
switch to GOD MODE

IMMORTAL

WIFI + BLUETOOTH + WIRED HEADSET



USER MANUAL

1000MAH
BATTERY

BLUETOOTH + WI-FI + WIRED



USB-A
DONGLE



2.4GHZ WI-FI,
BLUETOOTH, WIRED



ULTRA LOW
LATENCY 20MS



40 HOURS
BATTERY LIFE



50MM HIGH FIDELITY
DRIVER



ENC MICROPHONE



2 MODES
GAME & MUSIC



RGB LED



SPECIFICATIONS

Speaker Parameters:

- Driver Unit: $\Phi 50\text{mm}$
- Impedance: $16\pm 15\%\Omega$
- Sensitivity: $112\pm 3\text{dB}$ at 1KHz
- Frequency Response: 20-20KHz
- Rated Power: 20mW
- Plug Type: USB Dongle/Bluetooth 5.3

Detachable Mic Parameters:

- Mic Unit: $\Phi 6\text{mm}$
- Impedance: $\leq 2.2\text{K}\Omega$
- Directivity: Omni-directional
- Sensitivity: $-42\pm 3\text{dB}$ at 1KHz
- Frequency Response: 100-10KHz
- Battery capacity: 1000mAh
- Battery life: Upto 40h
- Charging time: 3h
- Distance: Upto 20m w/o obstacle
- Charging cable: 0.5m

MIC MODE



POWER BUTTON



MODE BUTTON





**x2 sec
Long Press**



Reject call



x3

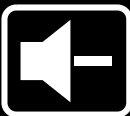


Switch between Game
& Music Mode

VOLUME CONTROL WHEEL



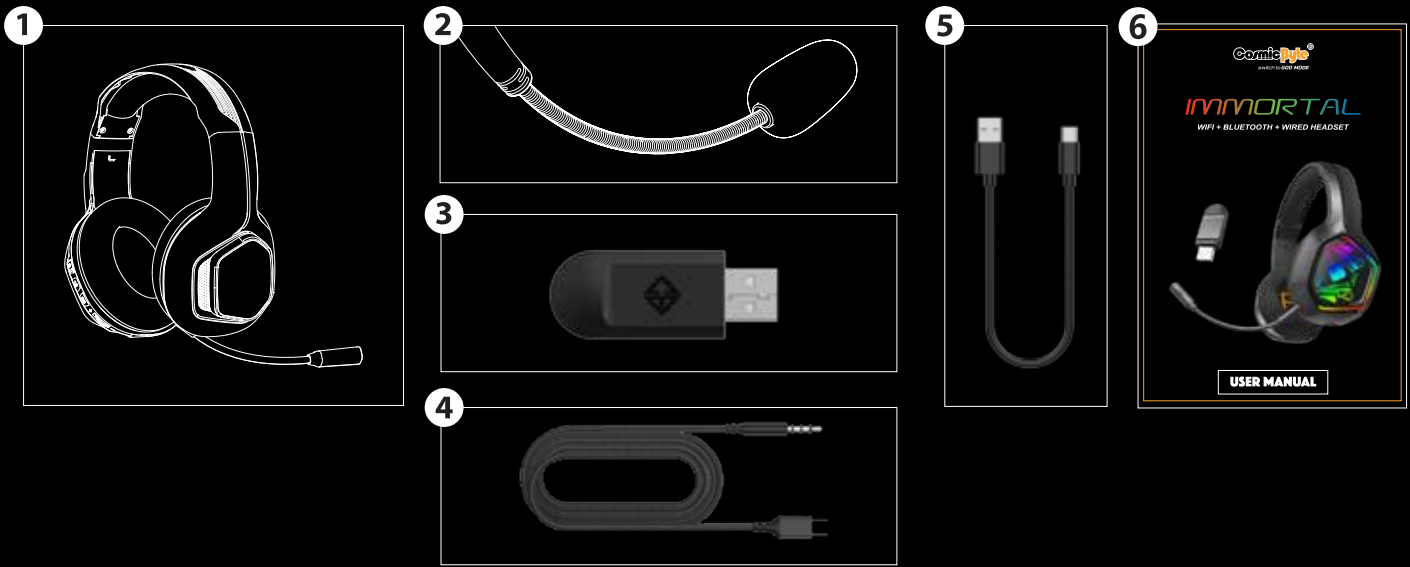
Scroll upward: Volume +



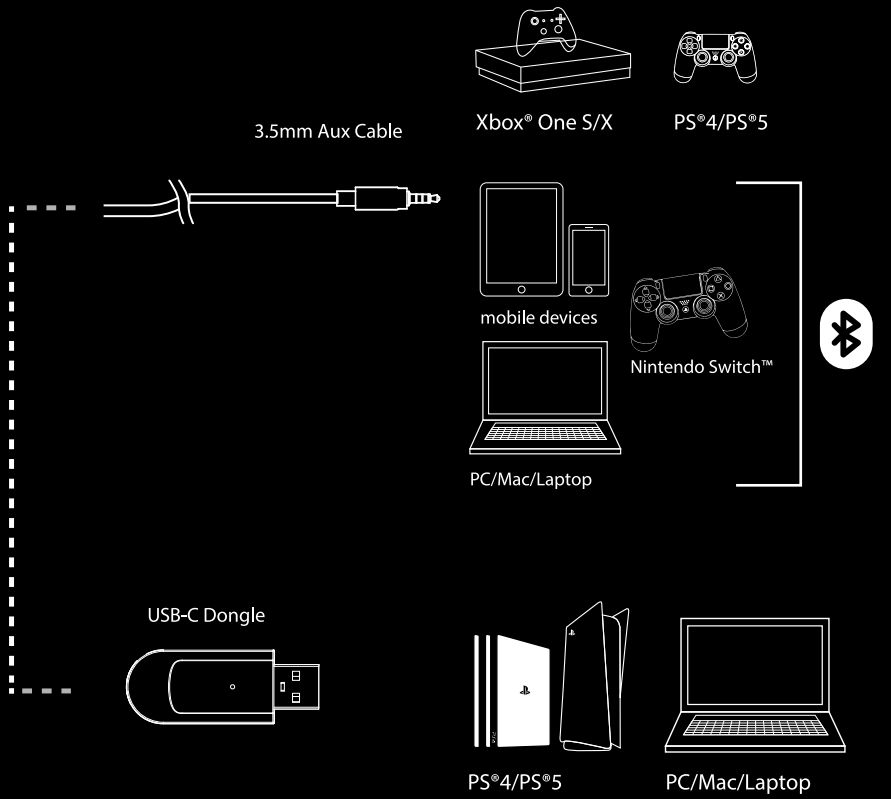
Scroll downward: Volume -

TYPE C CHARGING PORT





- 1 Headset
- 2 Microphone
- 3 Dongle
- 4 Aux Cable
- 5 Charging Cable
- 6 User Manual



USING THE HEADSET WITH MOBILES & PC

To use the headset with Mobiles & PC you can connect the headset using the USB dongle or pair it using Bluetooth. Switch to Bluetooth mode to enter pairing.

Note: We do not recommend using USB dongle for Mobiles as it can cause low volume and connection issues in some devices.

You can use the USB C to 3.5mm cable to connect the headset with the 3.5mm audio port.

USING THE HEADSET WITH PLAYSTATION 4 AND 5

To use the headset with PS4/PS5 you can connect the headset using the USB dongle or through the 3.5mm aux cable on the PS4/PS5 controller.

Make sure you visit the audio settings on PS4/PS5 and select "All audio to Headset or controller". Volume can be controlled from the Playstation Audio Settings.

USING THE HEADSET WITH XBOX

To use the headset with Xbox you can connect the headset using the 3.5mm aux cable to the controller. The headset will not work using USB dongle on Xbox.

LED INDICATION

- USB Dongle Disconnected = White LED Flashes
- USB Dongle Connected = White LED On
- Bluetooth Mode Disconnected = Blue LED Flashes
- Bluetooth Connected = Blue LED On
- Charging = Red LED On
- Charged = LED off

SUPPORT DETAILS

Phone: 07969273222 (Mon-Sat 10:00AM to 6:00 PM)
Email: cc@thecosmicbyte.com

WARRANTY

The Immortal carries 1 Year warranty against manufacturing defects only. Physical, Water damage and Tampered products are not covered under warranty. Regular wear and tear from battery usage is not covered under warranty.



[Scan the QR code to know the Warranty Claim Procedure.](#)

FAQ'S

support.thecosmicbyte.com